

SKR3132

32 Port Digital KVM Switch
2 Remote Users



OVERVIEW

SKR3132 is a 32 port Digital KVM Switch over IP console with dual power supply and two LAN access ports,. Up to 32 servers can be controlled from a local and remote console with a single SKR3132. It supports remote access and management to different servers and network devices, Simultaneously share 1 local console, 4 extended local consoles and 2 remote users to the attached servers.

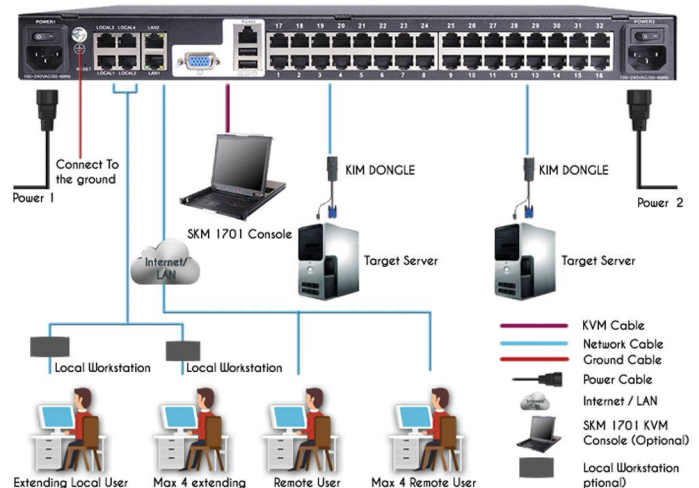
FEATURING

Hardware

- Compact 1 U steel construction - fit for standard 19" rack mount
- 32 KVM connectors, convenient connection between the KVM and servers via the KVM adaptor
- Supports 1 local user and 4 extended local users
- Single IP access that allows 2 IP users to access and control the server over a network
- Dual power supply, two 10/100/1000M NICs for redundant LAN

HD Resolution

- Local video resolution up to 2048x136@60Hz.
- Remote video resolution up to 1920x1080@60Hz
- Automatically adjust the remote desktop resolution to fit for different servers with different resolution



Security

- Remote Authentication Support LDAP, RADIUS.
- Flexible encryption design allows users to choose different encryption need about DES, SDES and AES
- Configurable user and group permissions for server access and control
- Supports security U key

Management Way

- Supports BIOS level access and control
- Remote access to the server via Browser, no software needed
- Local hotkeys ALT+number key, administrator can connect the regularly used servers to 1-9 KVM ports for convenient switching
- Full-screen or sizable and scalable Virtual Remote Desktop

Specifications



MODEL			SKR3132
Server Connections			32
Console ports	Local		1 local user, 4 extended local users（need local workstation）
	Remote		2 remote users
Connectors	Console Connectors	Keyboard	1 x USB
		Mouse	1 x USB
		Display	1× HDB-15 Female(blue)
	Server connectors		32× RJ45
	Power supply		2 x 3-Prong AC socket
	Network port		2×RJ45
	Serial port		1×RJ45
	Front panel USB		1xUSB
I/R value			100V~240V AC , 50/60Hz ,<1A
Resolution			Local: 2048x1536 @ 60Hz; Remote: 1920 x1080 @ 60Hz
Environment	Operating Temperature		0~40℃
	Storage Temperature		-20~60℃
	Humidity		0-80%RH,Non-condensing
Physical Characteristics	Material		Metal
	Weight		4.67kg
	Dimension		450mm×400mm×44mm