



Siselectron

TECHNOLOGY



Installation Guide

SNI-3052

www.siselectron.com.tw

sales@siselectron.com

support@siselectron.com.tw

Table of Contents

Chapter 1: Safety and Regulatory Information	1
1.1 Copyright	2
1.2 About the Manual	2
1.3 Intended Application Uses.....	2
1.4 Safety Information	2
1.4.1 Switch Safety Information	2
1.4.2 Installation Assembly Safety Instructions	3
1.4.3 Site Selection.....	3
1.4.4 Equipment Handling Practices.....	4
1.4.5 Power and Electrical Warnings.....	4
1.4.6 Power Cord Warnings.....	5
1.4.7 System Access Warnings	5
1.4.8 Rack Mount Warnings	6
1.4.9 Other Hazards	7
1.5 Regulatory and Compliance Information	8
1.5.1 Electromagnetic Compatibility Notices	8
1.5.2 Product Regulatory Compliance Markings	10
2.1 Front Panel	11
2.1.1 LED Description.....	11
2.2 Rear Panel.....	14
2.3 Package Contents	14
3.1 Unpack the Hardware	16
3.2 Install the Switch.....	16
3.2.1 Select the Location	16
3.2.2 Install the Switch.....	16
3.3 Connect to Power	18
3.4 Check the Installation	18
3.5 Connect Equipment	18
3.5.2 SFP+ Port	19
3.6 Connect to Console Port	20
3.7 Connect to Management Port	22
4.1 Initial Configuration Process	23
4.2 Configure the IP Address	23
4.2.1 Set IP Address Manually	23
4.2.2 Obtain IP Address by DHCP.....	23
4.3 Manage the Switch	25
4.3.1 CLI Management	25
4.3.2 SNMP Management	25
4.3.3 Web Management	26

4.4	Upgrade the Firmware	28
4.4.1	Upgrade the Firmware Image File	29
4.4.2	Upgrade Kernel, Uboot and Rootfs.....	30
5.1	Troubleshooting	32
5.1.1	Diagnostic Switch Indicator.....	32
5.1.2	Power and Cooling Problems	32
5.1.3	Installation	32
5.1.4	In-Band Access	33
5.2	Replace the Power Supply Unit.....	33
5.2.1	Remove the Power Supply Unit.....	34
5.2.2	Replace the Power Supply Unit.....	34
5.3	Customer Support	34

Safety and Regulatory Information

1.1 Copyright

All specifications and figures are subject to change without prior notice. Actual products may look different from the photos.

All trademarks and logos mentioned in this guide are the properties of their respective holders.

Copyright © 2015 Siselectron Technology. All rights reserved.




1.2 About the Manual

This installation guide is meant for network administrators with inept knowledge in network management.

To avoid personal injury or property damage, before you begin installing the product, read, observe, and adhere to all the following safety instructions and information.

The following symbols are used throughout the guide to highlight important information and may be marked on the product and / or the product packaging.

Table 1-1: Manual Conventions Icon

	NOTE: Indicates useful information.
	WARNING: Indicates safety information that if ignored may cause the system to malfunction or damage other equipment.
	CAUTION: Indicates safety information that if ignored may cause personal injury or death.

1.3 Intended Application Uses

This product was evaluated as Information Technology Equipment (ITE), which may be installed in offices, schools, computer rooms, and similar commercial type locations. The suitability of this product for other product categories and environments (such as medical, industrial, residential, alarm systems, and test equipment), other than an ITE application, may require further evaluation.

1.4 Safety Information

1.4.1 Switch Safety Information

To reduce the risk of body injury, electrical shock, fire, and equipment damage, read this document and observe all warnings and precautions before installing or maintaining your switch.

In the event of a conflict between the information in this document and the information provided with the product or on the website of a particular product, the product documentation takes precedence.

The switch should be integrated and serviced only by technically qualified persons.

You must adhere to the guidelines in this guide and the assembly instructions in the switch manuals to ensure and maintain compliance with existing product certifications and approvals. Use only the described, regulated components specified in this guide. Use of other products / components will void the UL Listing and other regulatory approvals of the product, and may result in noncompliance with product regulations in the region(s) in which the product is sold.

Follow the safety guidelines below to ensure personal safety and protect the system and the working environment from potential damage.



CAUTION:

The power supplies in the system may produce high voltages and energy hazards which can cause bodily harm. Do not remove the covers and access any of the components inside the system.



CAUTION:

To reduce the risk of electrical shock, disconnect all power supply cables before servicing the system.



CAUTION:

Do not use the mounted equipment as a shelf or a work space.



Restricted Access Location: The switch is intended for installation only in a Server Room or Computer Room where both these conditions apply:

- access can only be gained by SERVICE PERSONS or by USERS who have been instructed about the reasons for the restrictions applied to the location and about any precautions that shall be taken; and
- access is through the use of a TOOL or lock and key, or other means of security, and is controlled by the authority responsible for the location.

WARNING:

When a power supply needs replacement, replace the power supply only with the same or equivalent type recommended by the manufacturer. Replacing with an incorrect power supply may cause explosion.

- Observe and follow service markings. Do not service the product yourself. Components inside the system should only be serviced by trained service technician.
- If any of the following conditions occur, unplug the equipment from the electrical outlet and replace the part or contact a trained service technician:
 - The power cable, extension cable, or plug is damaged
 - The equipment has been exposed to water
 - The equipment has been dropped or damaged
 - The equipment does not operate correctly when you follow the operating instructions
- Do not spill food or liquid on the equipment.
- Never operate the equipment in a wet environment.
- Do not push any objects into the opening of the equipment. Doing so may short internal components and cause fire or electric shock.
- Use the system only with approved equipment.
- Allow the product to cool before removing any peripherals.
- Operate the equipment only from the type of external power source indicated on the electrical ratings label. If you are unsure of the type of power source required, consult your local power company.
- Use only approved power cable(s).
- To help prevent electric shock, plug the system and peripheral power cables into properly grounded electrical outlets. Do not use adapter plugs or remove the grounding prong from a cable. If you must use an extension cable, use an extension cable with properly grounded plugs.

- Observe extension cable and power strip ratings. Ensure that the total ampere rating of all products plugged into the extension cable or power strip does not exceed 80% of the ampere ratings limit for the extension cable or power strip.
- To protect the equipment from sudden, transient increase or decrease in electrical power, use a surge suppressor, line conditioner, or uninterruptible power supply (UPS).
- Do not modify power cables or plugs. Consult a licensed electrician or your power company for site modifications. Always follow your local/national wiring rules.
- To avoid possible damage to the system board, wait 5 seconds after turning off the system before removing a component from the system board or disconnecting a peripheral device.
- When connecting or disconnecting power to the hot-pluggable power supply units, observe the following guidelines:
 - Unplug the power cable before removing the power supply.
 - Install the power supply to the system before connecting the power cable to the power supply.
 - If the system has multiple sources of power, disconnect power from the system by unplugging all power cables from the power supplies.
- When disconnecting a cable, pull on its connector or on its strain-relief loop, and not on the cable itself.

1.4.2 Installation Assembly Safety Instructions

- The power supply in this product contains no user-serviceable parts. Refer servicing only to qualified personnel.
- Do not attempt to modify or use the supplied AC power cord if it is not the exact type required. A product with more than one power supply will have a separate AC power cord for each supply.
- To remove the AC power from the system, you must unplug each AC power cord from the wall outlet or power supply. The power cord(s) is considered the disconnect device to the main (AC) power. The socket outlet that the system plugs into shall be installed near the equipment and shall be easily accessible.
- A microprocessor and heat sink may be hot if the system has been running. Also, there may be sharp pins and edges on some board and chassis parts. Contact should be made with care. Consider wearing protective gloves.
- Danger of explosion if the battery is incorrectly replaced. Replace only with the same or equivalent type recommended by the equipment manufacturer. Dispose of used batteries according to manufacturer's instructions.
- The system is safety certified as rack-mounted equipment for use in a server room or computer room, using the customer rack kit. The rail racks are designed to carry only the weight of the system. Do not place additional load onto any rail-mounted equipment. System rack kits are intended to be installed in a rack by trained service technicians.

1.4.3 Site Selection

The system is designed to operate in a typical office environment. Choose a site that is:

- Clean and free of airborne particles (other than normal room dust).
- Well ventilated and away from sources of heat including direct sunlight and radiators.
- Away from sources of vibration or physical shock.
- Isolated from strong electromagnetic fields produced by electrical devices.
- In regions that are susceptible to electrical storms, we recommend you plug your system into a surge suppressor and disconnect telecommunication lines to your modem during an electrical storm.

- Provided with a properly grounded wall outlet.
- Provided with sufficient space to access the power supply cord(s), because they serve as the product's main power disconnect.
- Provided with either two independent AC power sources or two independent phases from a single source.

1.4.4 Equipment Handling Practices

Reduce the risk of personal injury or equipment damage:

- Conform to local occupational health and safety requirements when moving and lifting equipment.
- Use mechanical assistance or other suitable assistance when moving and lifting the equipment.
- To reduce the weight for easier handling, remove any easily detachable components.

1.4.5 Power and Electrical Warnings



CAUTION:

The power is active whenever the system is plugged in. To remove power from the system, you must unplug the AC power cord from the wall outlet. Your system may use more than one AC power cord. Make sure all AC power cords are unplugged. Make sure the AC power cord(s) is/are unplugged before you open the chassis, or add or remove any non hot-plug components.



CAUTION:

Do not attempt to modify or use an AC power cord if it is not the exact type required. A separate AC cord is required for each system power supply.



CAUTION:

The power supply in this product contains no user-serviceable parts. Do not open the power supply. Hazardous voltage, current and energy levels are present inside the power supply. Return to manufacturer for servicing.



CAUTION:

When replacing a hot-plug power supply, unplug the power cord to the power supply being replaced before removing it from the switch.

1.4.6 Power Cord Warnings

If an AC power cord was not provided with your product, purchase one that is approved for use in your country.



CAUTION:

To avoid electrical shock or fire, check the power cord(s) that will be used with the product as follows:

- Do not attempt to modify or use the AC power cord(s) if they are not the exact type required to fit into the grounded electrical outlets.
- The power cord(s) must meet the following criteria: The power cord must have an electrical rating that is greater than that of the electrical current rating marked on the product.



CAUTION:

The power cord must have safety ground pin or contact that is suitable for the electrical outlet.



CAUTION:

The power supply cord(s) is/are the main disconnect device to AC power. The socket outlet(s) must be near the equipment and readily accessible for disconnection.



CAUTION:

The power supply cord(s) must be plugged into socket outlet(s) that is/are provided with a suitable earth ground.

1.4.7 System Access Warnings



CAUTION:

To avoid personal injury or property damage, the following safety instructions apply whenever accessing the inside of the product:

- Turn off all peripheral devices connected to this product.
- Disconnect the AC power by unplugging all AC power cords from the system or wall outlet.
- Disconnect all cables and telecommunication lines that are connected to the system.
- Retain all screws or other fasteners when removing access cover(s). Upon completion of accessing inside the product, refasten access cover with original screws or fasteners.
- Do not access the inside of the power supply. There are no serviceable parts in the power supply. Return to the manufacturer for servicing.
- Power down the switch and disconnect all power cords before adding or replacing any non hot-plug component.
- When replacing a hot-plug power supply, unplug the power cord to the power supply being replaced before removing the power supply from the switch.



CAUTION:

Unless you are adding or removing a hot-plug component, allow the system to cool before opening the covers. To avoid the possibility of coming into contact with hot component(s) during a hot-plug installation, be careful when removing or installing the hot-plug component(s).



CAUTION:

To avoid injury do not contact moving fan blades. If your system is supplied with a guard over the fan, do not operate the system without the fan guard in place.

1.4.8 Rack Mount Warnings

The following installation guidelines are required by UL for maintaining safety compliance when installing your into a rack.

The equipment rack must be anchored to an unmovable support to prevent it from tipping when a server or piece of equipment is extended from it. The equipment rack must be installed according to the rack manufacturer's instructions.

Install equipment in the rack from the bottom up, with the heaviest equipment at the bottom of the rack.

Extend only one piece of equipment from the rack at a time.

You are responsible for installing a main power disconnect for the entire rack unit. This main disconnect must be readily accessible, and it must be labeled as controlling power to the entire unit, not just to the server(s).

To avoid risk of potential electric shock, a proper safety ground must be implemented for the rack and each piece of equipment installed in it.

Elevated Operating Ambient - If installed in a closed or multi-unit rack assembly, the operating ambient temperature of the rack environment may be greater than the room ambient. Therefore, consideration should be given to installing the equipment in an environment compatible with the maximum ambient temperature (T_{ma}) specified by the manufacturer.

Reduced Air Flow - Installation of the equipment in a rack should be such that the amount of air flow required for safe operation of the equipment is not compromised.

Mechanical Loading - Mounting of the equipment in the rack should be such that a hazardous condition is not achieved due to uneven mechanical loading.

Circuit Overloading - Consideration should be given to the connection of the equipment to the supply circuit and the effect that overloading of the circuits might have on overcurrent protection and supply wiring. Appropriate consideration of equipment nameplate ratings should be used when addressing this concern.

Reliable Earthing - Reliable earthing of rack-mounted equipment should be maintained.

Particular attention should be given to supply connections other than direct connections to the branch circuit (e.g. use of power strips).

1.4.9 Other Hazards

1.4.9.1 Battery Replacement



CAUTION:

There is the danger of explosion if the battery is incorrectly replaced. When replacing the battery, use only the battery recommended by the equipment manufacturer.



CAUTION:

Dispose of batteries according to local ordinances and regulations.



CAUTION:

Do not attempt to recharge a battery.



CAUTION:

Do not attempt to disassemble, puncture, or otherwise damage a battery.

1.4.9.2 Cooling and Airflow



CAUTION:

Carefully route cables as directed to minimize airflow blockage and cooling problems. For proper cooling and airflow, operate the system only with the chassis covers installed. Operating the system without the covers in place can damage system parts. To install the covers:

- Check first to make sure you have not left loose tools or parts inside the system.
- Check that cables, add-in cards, and other components are properly installed.
- Attach the covers to the chassis according to the product instructions.

1.4.9.3 Laser Peripherals or Devices



CAUTION:

To avoid risk of radiation exposure and/or personal injury:

- Do not open the enclosure of any laser peripheral or device
- Laser peripherals or devices are not serviceable
- Return to the manufacturer for servicing
- Use certified Optical Fiber Transceiver Class 1 Laser Product

1.5 Regulatory and Compliance Information

1.5.1 Electromagnetic Compatibility Notices

1.5.1.1 FCC Verification Statement (USA)

This device complies with Part 15 of the FCC Rules. Operation is subject to the following two conditions: (1) this device may not cause harmful interference, and (2) this device may accept any interference received, including interference that may cause undesired operation.

This equipment has been tested and found to comply with the limits for a Class A digital device, pursuant to part 15 of the FCC Rules. These limits are designed to provide reasonable protection against harmful interference when the equipment is operated in a commercial environment. This equipment generates, uses, and can radiate radio frequency energy and, if not installed and used in accordance with the instruction manual, may cause harmful interference to radio communications. However, there is no guarantee that interference will not occur in a particular installation. If this equipment does cause harmful interference to radio or television reception, which can be determined by turning the equipment off and on, the user is encouraged to try to correct the interference by one or more of the following measures:

- Reorient or relocate the receiving antenna.
- Increase the separation between the equipment and the receiver.
- Connect the equipment to an outlet on a circuit other than the one to which the receiver is connected.
- Consult the dealer or an experienced radio/TV technician for help.

Any changes or modifications not expressly approved by the grantee of this device could void the user's authority to operate the equipment. The customer is responsible for ensuring the compliance of the modified product.

Only peripherals (computer input/output devices, terminals, printers, etc.) that comply with FCC Class A or B limits may be attached to this computer product. Operation with noncompliant peripherals is likely to result in interference to radio and TV reception.

All cables used to connect to peripherals must be shielded and grounded. Operation with cables, connected to peripherals, that are not shielded and grounded may result in interference to radio and TV reception.

1.5.1.5 Regulated Specified Components

To maintain the UL listing and compliance to other regulatory certifications and/or declarations, the following regulated components must be used and conditions adhered to. Interchanging or use of other component will void the UL listing and other product certifications and approvals.

If you do not have access to the Web address, please contact your local representative.

- Add-in cards: must have a printed wiring board flammability rating of minimum UL94V-1. Add-in cards containing external power connectors and/or lithium batteries must be UL recognized or UL listed. Any add-in card containing modem telecommunication circuitry must be UL listed. In addition, the modem must have the appropriate telecommunications, safety, and EMC approvals for the region in which it is sold.
- Peripheral Storage Devices: must be UL recognized or UL listed accessory and TUV and VDE licensed. Maximum power rating of any one device is 19 watts. Total server configuration is not to exceed the maximum loading conditions of the power supply.

1.5.1.6 Restriction of Hazardous Substances (RoHS) Compliance

Siselectron Technology has a system in place to restrict the use of banned substances in accordance with the European Directive 2002/95/EC. Compliance is based on declaration that materials banned in the RoHS Directive are either (1) below all applicable threshold limits or (2) an approved / pending RoHS exemption applies.

RoHS implementation details are not fully defined and may change.

Threshold limits and banned substances are noted below:

- Quantity limit of 0.1% by mass (1000 PPM) for:
 - Lead
 - Mercury
 - Hexavalent Chromium
 - Polybrominated Biphenyls Diphenyl Ethers (PBDE)
- Quantity limit of 0.01% by mass (100 PPM) for:
 - Cadmium

1.5.1.7 End of Life / Product Recycling

Product recycling and end-of-life take-back systems and requirements vary by country. Contact the retailer or distributor of this product for information about product recycling and/or take-back.

1.5.2 Product Regulatory Compliance Markings

This product is marked with the following product certification markings:

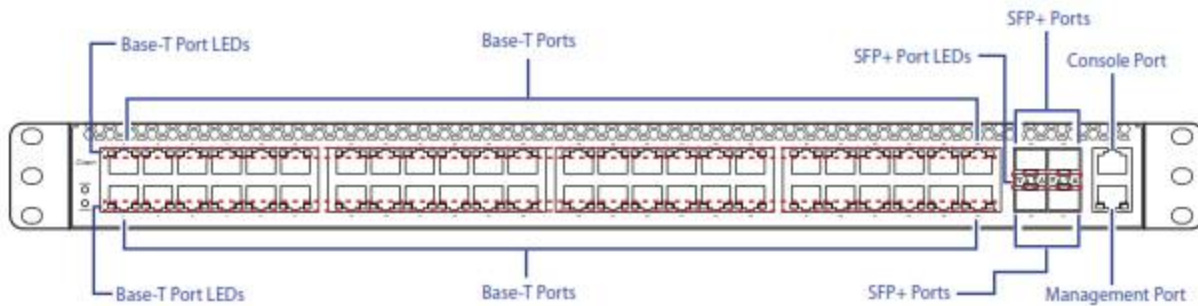
Table 1-2: Product Regulatory Compliance Markings

Regulatory Compliance	Region	Marking
CE Mark	Europe	
FCC Marking (Class A)	USA	This device complies with Part 15 of the FCC Rules. Operation of this device is subject to the following two conditions: (1) This device may not cause harmful interference, and (2) This device must accept any interference received, including interference that may cause undesired operation.

2.1 Front Panel

The following figures show the front panel of the switch.

Figure 2-1: Front Panel View

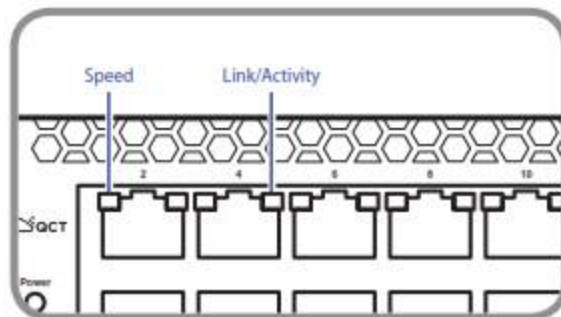


2.1.1 LED Description

The following tables describe the LEDs on the front of the switch.

2.1.1.1 Base-T Port LEDs

Figure 2-2: Base-T Port LEDs



NOTE:

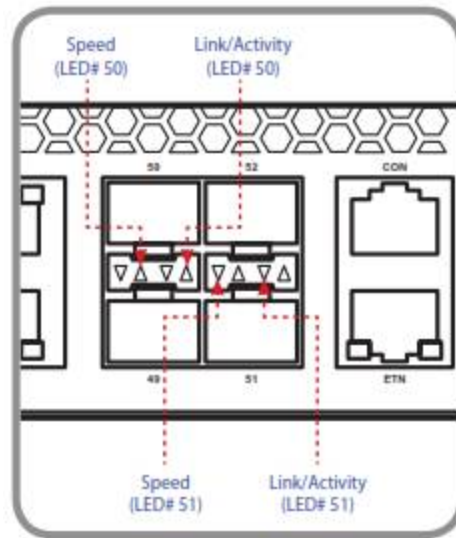
The Speed LED is located on the left on each port.
The Link/Activity LED is located on the right on each port.

Table 2-1: Base-T Port LEDs

LED	Description
Speed	<ul style="list-style-type: none"> Orange: A valid 1000Mbps network link is established. Green: A valid 100Mbps network link is established. Off: A valid 10Mbps network link is established.
Link/Activity	<ul style="list-style-type: none"> Green: A valid network link is established. Flashing Green: Network transmission and receiving packet in progress. Off: No network activity or port is disabled.

2.1.1.2 SFP+ Port LEDs

Figure 2-3: SFP+ Port LEDs



NOTE:

is the LED indicator for the upper row ports.
is the LED indicator for the lower row ports.

Table 2-2: SFP+ Port LEDs

LED	Description
Speed	<ul style="list-style-type: none"> Green: A valid link is established on the port. Off: Port is disabled.
Link/Activity	<ul style="list-style-type: none"> Green: A valid network link is established. Flashing Green: Network transmission and receiving packet in progress. Off: No network activity.

2.1.1.3 Function and Management Port LEDs

Figure 2-4: Function Port LEDs

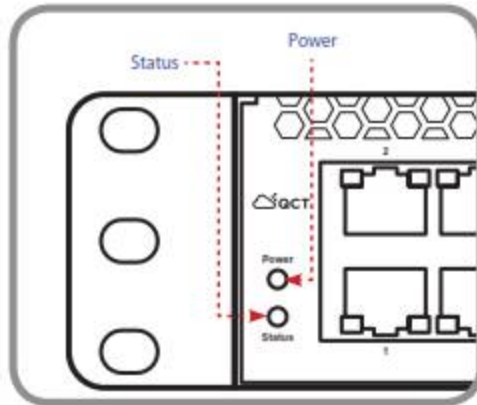


Figure 2-5: Management Port LEDs

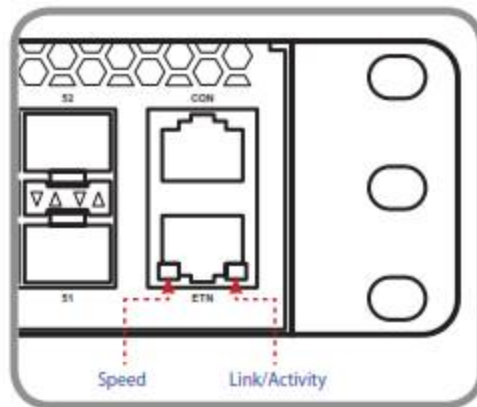


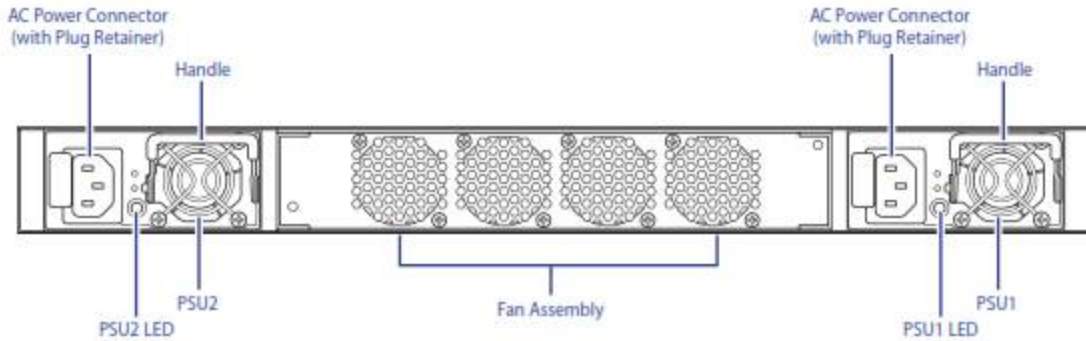
Table 2-3: Function and Management Port LEDs

LED	Description
Status	<ul style="list-style-type: none"> Yellow: System failure.
Power	<ul style="list-style-type: none"> Green: All DC power good.
Speed	<ul style="list-style-type: none"> Orange: A valid 1000Mbps network link is established. Green: A valid 100Mbps network link is established. Off: A valid 10Mbps network link is established.
Link/Activity	<ul style="list-style-type: none"> Green: A valid network link is established. Flashing Green: Network transmission and receiving packet in progress. Off: No network activity or port is disabled.

2.2 Rear Panel

The following figure shows the rear panel of the switch.

Figure 2-6: Rear Panel View



The switch has two Power Supply Units (PSU) and four fan modules. The fan modules can be built in as back-to-front or front-to-back depending on customer requirements.

The AC power connector is a standard three-pronged connector. The switch automatically adjusts its power setting to any supply voltage in the range from 100~240 VAC at 50~60 Hz.

When the PSU is connected to the power source, the PSU LED lights green.

Table 2-4: Power Supply LEDs

LED	Description
Power Supply	<ul style="list-style-type: none"> • Green: Power connection works normally. • Yellow: Possible issues: <ul style="list-style-type: none"> - Fan Lock (15 sec) - OTP: Over Temperature Process - OCP: Over Current Process - OVP: Over Voltage Process - UVP: Under Voltage Process

2.3 Package Contents

The following items are included with a standard package. When you open the box, check if all items are included and free of damage.

- One LB9 Network Switch
- Mounting kit: 2 mounting brackets and screws (already install on the switch)
- Four rubber feet with adhesive backing
- Console cable
- Two AC power cords
- Statement paper

3.1 Unpack the Hardware

Ensure all items are included in the package before starting the installation.

NOTE:

The packing box is heavy. It is recommended for two persons to carry the box and perform the installation.

1. Place the box on a flat and stable surface and cut the straps securing the box.
2. Remove the hardware and place it on a flat and clean surface.
3. Remove all other items from the box.
4. Inspect each item to make sure all items are included and free from damage.
5. Keep the packaging box in case you need to transport the switch.

3.2 Install the Switch

For a successful installation, perform the steps below in the following order:

1. Select the location
2. Install the switch
3. Connect the Power Source
4. Check the installation

3.2.1 Select the Location

The switch can be installed in the following ways:

- Flat surface installation: Placed as a standalone unit on a flat surface.
- Rack-mounted installation: Installed in a standard rack

3.2.1.1 Installation and Safety Considerations

Consider the following when choosing an installation location:

- The installation location allows you to view and access the front and rear panel ports.
- The installation location is located within a proper distance to the power source. The power source must be properly grounded and readily accessible.
- The installation location allows you to route and organize cables for easy cable management and maintenance.
- The installation location is free from strong electromagnetic field sources, such as radiators, motors, and heat sources.
- The installation location is not exposed to direct sunlight, rain or moisture.
- The installation surroundings must have adequate ventilation. Proper clearance between the switch and the wall or other equipment must be observed.
- If installing on a rack, ensure the cabinet is stable and secure to withstand any unexpected movement, such as an earthquake. Ensure the rack or cabinet can support the weight of the switch and other additional weight.

3.2.1.2 Items Required for Installation

The following items are required for installing, configuring, and connecting the switch:

- A workstation
- Ethernet cable
- Console cable
- SFP+ modules
- Phillips screwdriver

3.2.2 Install the Switch

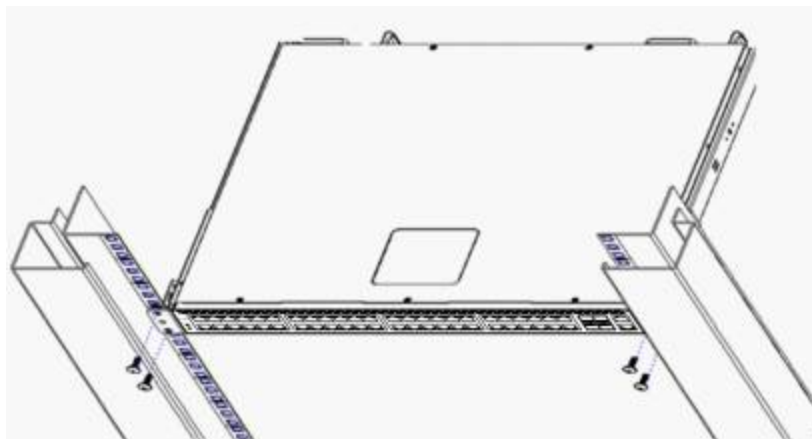
3.2.2.1 Install in a Rack

You can install the switch in most standard 19-inch (48.3-cm) racks.

Without Rail Installation

Align the built-in mounting ear to the rack holes and secure them with screws.

Figure 3-1: Install Switch on Rack (Without Rail)



With Rail Installation

1. Align the rail holes with the holes on the switch.

Figure 3-2: Holes Alignment



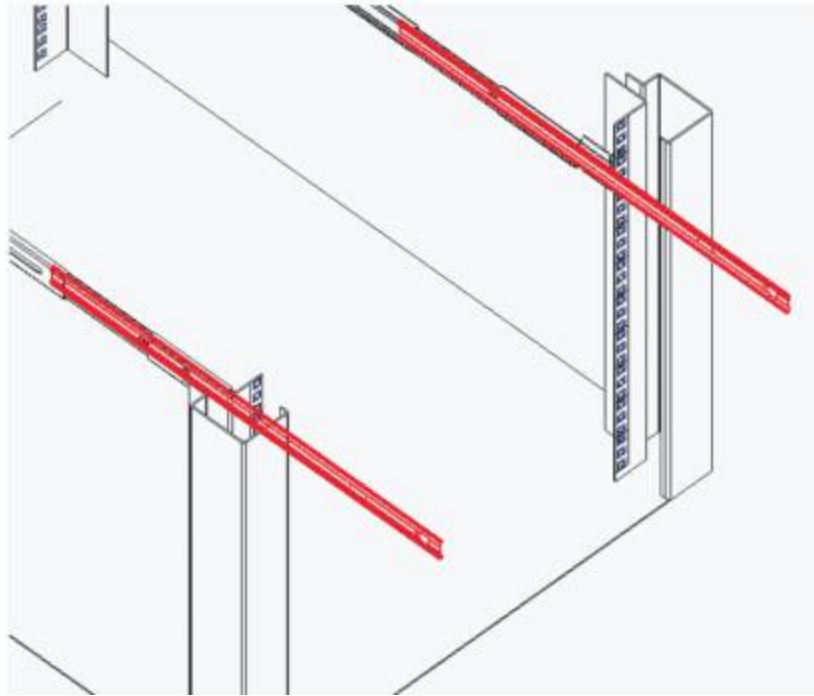
2. Secure them with two screws.

Figure 3-3: Secure Position



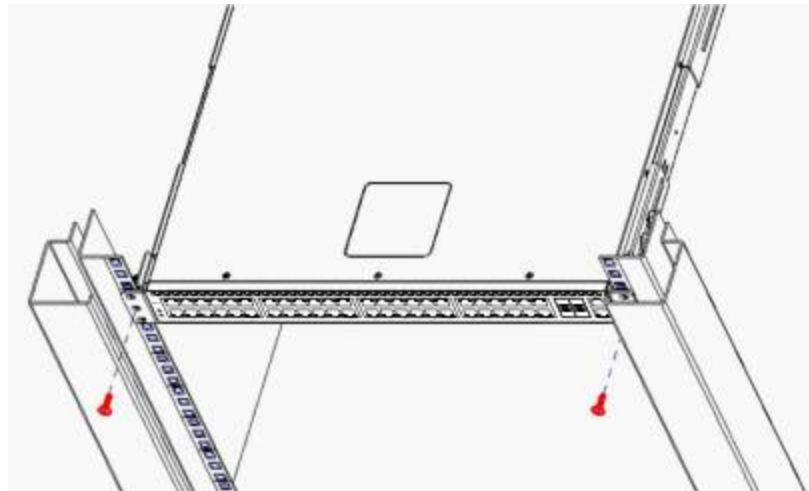
3. Pull out the internal rail.

Figure 3-4: Pull Out Rack Rail



4. Align the brackets to the rail holes and secure them with screws.

Figure 3-5: Install Switch on Rail



3.3 Connect to Power

The switch has two Power Supply Units (PSU). Each PSU has an AC power connector. Depending on your needs, you may opt to use one or both PSUs at a time.

To connect the switch to a power source, do the following:

1. Connect one end of the AC power cord to an AC power connector.
2. If you want to use two PSUs, connect another strip of AC power cord to the other AC power connector. Otherwise, skip this step.
3. Connect the other end(s) of the AC power cord(s) to grounded power outlet(s).

The switch has no power button. Once an AC power cord is connected to a power outlet, the switch power is turned on. The Power LED lights green.

3.4 Check the Installation

Check the following pointers to inspect the installation:

- Is the switch securely installed and stable?
- Is/Are the AC power cord(s) properly connected to the power outlet(s)?
- Is the Power LED (on the Console port) lit green?

3.5 Connect Equipment

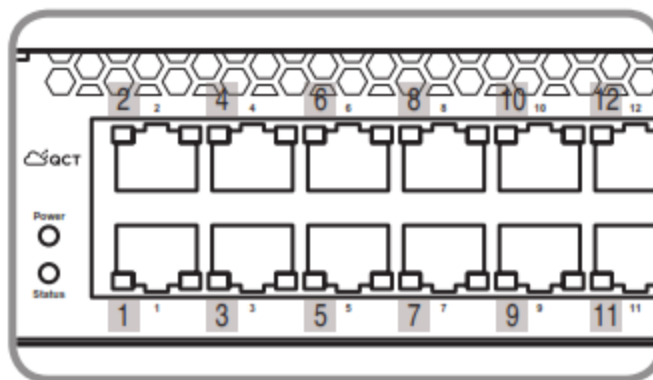
You can connect equipment to the switch through the Base-T and SPF+ ports.

3.5.1 Base-T Port

The switch has 48 10Base-T / 100Base-TX / 1000Base-T ports. The port supports auto-negotiation. If the attached device also supports auto-negotiation, the transmission can operate in full duplex, and data rate can be in 10Mbps, 100Mbps, or 1000Mbps.

The Base-T ports are numbered and have corresponding Base-T port LEDs as shown on the illustration below.

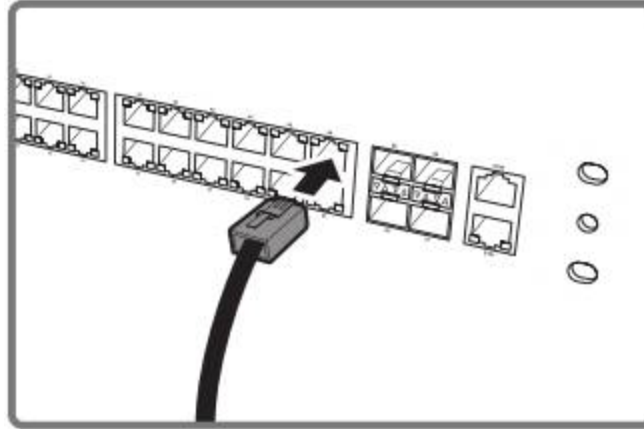
Figure 3-6: Base-T Port Numbering



To connect to the Base-T port, do the following:

1. Connect one end of an Ethernet cable to the Base-T port.

Figure 3-7: Connect to Base-T Port



2. Connect the other end of the Ethernet cable to a network.

The Base-T port LED (Link/Activity LED) lights green when the network link is established.

NOTE:

Ethernet cables are not included in the package. Contact your dealer to purchase.

3.5.2 SFP+ Port

The switch has 4 dual speed 1GbE/10GbE SFP+ ports. The Small Form-Factor Pluggable Plus (SFP+) port is the second generation of the SFP interconnect system designed for 10Gb/s data rate.

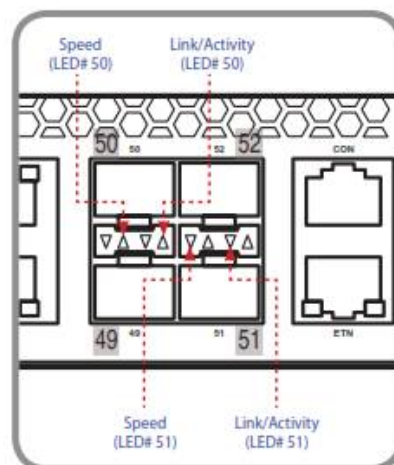
The SFP+ ports are numbered and have corresponding SFP+ port LEDs as shown on the illustration below.

NOTE:

is the LED indicator for the upper row ports.

is the LED indicator for the lower row ports.

Figure 3-8: SFP+ Port Numbering

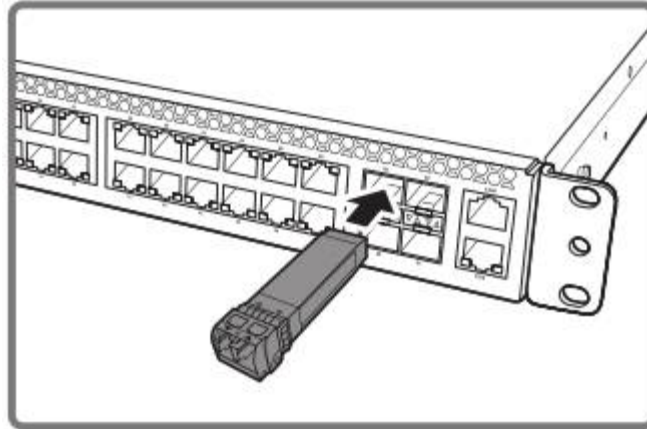


The 4 SFP+ ports support 10-gigabit IEEE 802.3ae Ethernet for fiber mediums.

To install an SFP+ module, do the following:

1. Slide the SFP+ module into an SFP+ port.

Figure 3-9: Connect SFP+ Module



2. Push completely until the module locks into place.
3. Repeat the above procedures to install additional SFP+ modules.

The SFP+ port LED lights green when the network link is established.

NOTE:

SFP+ modules are not included in the package. Contact your dealer to purchase.

3.6 Connect to Console Port

The console port is used for setting up and managing the switch via a connection to a console terminal or PC using a terminal emulation program. You can connect the switch to a terminal or PC using the supplied console cable (RJ-45 male to RS-232 female cable) for serial communication.

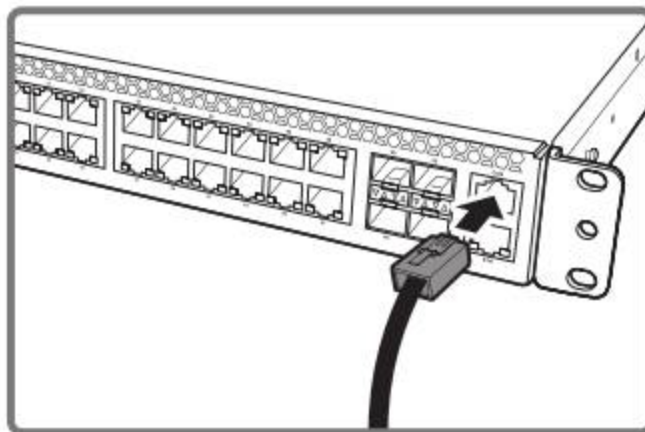
Below is the console cable wiring specification table:

RJ-45 Port of Switch	DB9 Female Port of PC	Abbreviation	Description
3	2	RD	Received Data
6	3	TD	Transmit Data
1	8	CTS	Clear To Send
8	7	RTS	Request To Send
5	5	GND	Ground

To connect to the console, do the following:

1. Connect the RJ-45 connector to the console port of the switch.

Figure 3-10: Connect to Console Port



2. Connect the RS-232 end to a terminal or PC.
3. Manage the switch using the CLI commands (refer to the CLI User Manual for more information).



NOTE:

- The port LEDs beside the console port show the status of power and system OS

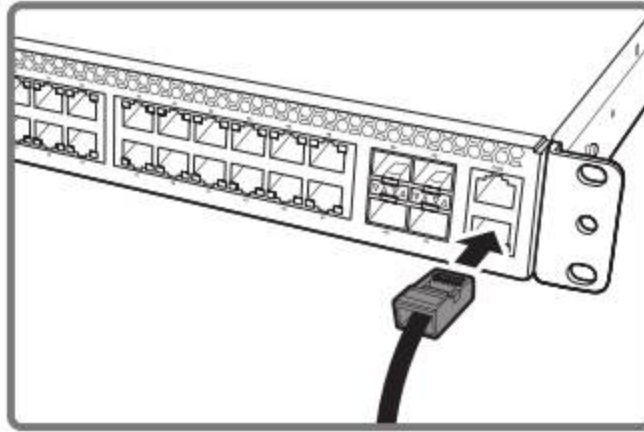
3.7 Connect to Management Port

The switch has one management port. The management port is a dedicated port interface which is segregated from data traffic crossing other downlink or uplink ports. The port supports auto-negotiation. If the attached device also supports auto-negotiation, the transmission can operate in either half or full duplex, and data rate can be in 10Mbps, 100Mbps, or 1000Mbps. Telnet, SNMP, and Web browser utility can all go through this port for local or remote management after the IP address, subnet mask, and default gateway are properly configured.

To connect to the management port, do the following:

1. Connect one end of an Ethernet cable to the management port.

Figure 3-11: Connect to Management Port



2. Connect the other end of the Ethernet cable to a network.

The Management port LED (Link/Activity LED) lights green when the network link is established.

4.1 Initial Configuration Process

When using the switch for the first time, configuration must be carried out through a console. Perform the following steps to configure the switch:

1. Connect a terminal to the console port.
2. Manually configure the IP Address by CLI
3. Manage the switch.

4.2 Configure the IP Address

You can configure the switch with a static IP address or use a Dynamic Host Configuration Protocol (DHCP) server to automatically obtain an IP address for the switch. For the first time configuration, it is recommended to set the IP address manually.

4.2.1 Set IP Address Manually

To set the IP address of the switch manually, perform the following:

1. Connect the switch to a computer with a terminal emulation program via the Console port.
2. On the terminal emulation program, select the appropriate serial port and set the following configurations:
 - Baud rate: 115200
 - Data width: 8 bits
 - Parity: None
 - Stop bits: 1
 - Flow control: None
3. After setting up the terminal, plug the power cable(s) to the AC power connector(s) of the switch. The boot up screen appears in the terminal. The boot up process may take a few minutes to complete.

Figure 4-1: Boot Up Console Screen

```
L2:      512 KB enabled
MMC:    FSL_ESDEC: 0

SNI 3052 U-Boot
  Product Name       : SNI 3052
  Model Name        : Sisteck SNI 3052
  Serial Number     : 123456789
  Part Number       : 1LY2BZ20002
  Label Revision Number : 1
  Hardware Version  : 0.1
  Platform Version  : 0xf201
  Release Date      : 2007/1/1
  MAC Address       : 00:c0:9f:03:00:03
Set ethaddr MAC address = 00:c0:9f:03:00:04
PCIe1: Root Complex of Slot 2, x2, regs @ 0xffe0a000
      01:00.0 - 14e4:b845 - Network controller
PCIe1: Bus 00 - 01
In:     serial
Out:    serial
Err:    serial
Net:    eTSEC1: PHY is Broadcom BCM5461S (2060c1)
eTSEC1
Hit any key to stop autoboot:
User:admin
```

4. When prompted for the User and Password, input “**admin**” for user and leave the password empty, then press <Enter>.
5. The “(Sisteck) >” prompt appears. From this point, you can execute CLI commands which are limited to the general user. To view the commands, input “?”; a list of the available commands appears.

Figure 4-2: General Mode CLI Command List Screen

```
(Sistech) >?
enable          Enter into user privilege mode.
help           Display help for various special keys.
logout         Exit this session. Any unsaved changes are lost.
password       Change an existing user's password.
ping          Send ICMP echo packets to a specified IP address.
quit           Exit this session. Any unsaved changes are lost.
show          Display Switch Options and Settings.
ssh           SSH to a remote host.
telnet        Telnet to a remote host.
(Sistech) >
```

6. On the prompt, input “**enable**” to enable the **Privilege** mode. In this mode, you can configure the IP address and execute other advanced CLI commands (see “CLI Documentation” for more information).
7. On the prompt, input “**configure**”. The prompt changes to “(Sistech) **(Config) #**”.
8. Set the service port IP address (in the example below, the service port IP address is set to 192.168.2.1)


```
Configure
Serviceport protocol none
Serviceport ip 192.168.2.1 255.255.255.0
exit
```

Figure 4-3: Set Service Port IP Screen

```
(Sistech) #configure
(Sistech) (Config)#serviceport protocol none
Changing protocol mode will reset ip configuration.
Are you sure you want to continue? (y/n)y
(Sistech) (Config)#serviceport ip 192.168.2.1 255.255.255.0
(Sistech) (Config)#exit
(Sistech) #
```

9. Input “**ip default-gateway <gateway>**” (where <gateway> is a value between 0.0.0.0 to 255.255.255.255).
10. From this point, the IP address, subnet mask, and gateway of the switch has been set. On the command prompt, input “**exit**” to go back one level. The prompt changes to “**(Sistech) #**”.
11. Input “**show ip interface**” to display the network configurations of the switch.

4.2.2 Obtain IP Address by DHCP

When using a DHCP server, the switch obtains an IP address, subnet mask, and default gateway from the DHCP server. Ask your network administrator to identify the IP address assigned to the switch. Use this IP address to login to the Web Utility to configure the switch.

4.3 Manage the Switch

After the initial configuration, you may manage and monitor network activity by CLI or SNMP management, or by using the Web browser utility.

4.3.1 CLI Management

The Command Line Interface (CLI) is administered when the terminal is directly connected to the Console port of the switch. This is an out-of-band connection, which means that it is on a different circuit than normal network communications, and thus works even when the network is down. After setting the IP address of the switch, you can also use a console program, such as Telnet, to access and control the switch.

For more information on CLI commands, see the “CLI Documentation”.

4.3.2 SNMP Management

After configuring the IP address and upgrading the firmware, you can manage and monitor network activity by SNMP.

Simple Network Management Protocol (SNMP) is an application-layer protocol defined by the Internet Architecture Board (IAB) in RFC1157 for managing and monitoring network devices. SNMP is one of widely accepted protocols used to manage and monitor network elements. The switch supports SNMP version 1.0, 2.0, and 3.0.

The basic components and functions of SNMP are as follows:

- A Managed Device, in this case the switch
- An SNMP Agent
- SNMP Manager
- Management Information Database or Base (MIB)

The switch comes bundled with an SNMP Agent, which runs locally on the device. The SNMP Agent communicates with an SNMP-compatible console program, called the SNMP Manager.

The commonly shared database between the SNMP Agent and the SNMP Manager is called Management Information Base (MIB). In short, MIB files are the set of questions that the SNMP Manager can ask the SNMP Agent. The SNMP Agent collects these data locally and stores it, as defined in the MIB.

The MIBs contain a standard set of statistical and control values defined for the managed devices on a network. The SNMP protocol also allows the extension of these standard values with values specific to a particular SNMP Agent through the use of private MIBs. See the “SNMP Documentation” for more information on using SNMP.

By default, you can use the community name “public” to get SNMP objects or use “private” to get and set SNMP objects.

4.3.2.1 Telnet or SSH Management

By default, Telnet can be used to directly manage the switch without necessary settings.

However when using SSH, you must generate the RSA and DSA keys first to globally enable the SSH function on the switch.

1. To generate the DSA and RSA keys, input the following commands:
 “Crypto key generate dsa”
 “Crypto key generate rsa”
2. After generating the DSA and RSA keys, enable SSH function by entering the following command:
 “ip ssh”

4.3.3 Web Management

Use Web Browser Utility to manage and monitor the switch in a user-friendly interface.

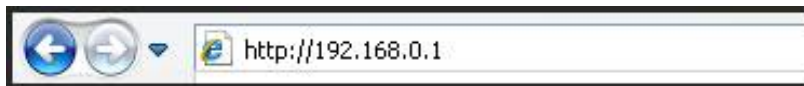
4.3.3.1 Access the Web Browser Utility

The switch has a Web Browser Utility that you can use to configure the switch. From the Web Browser Utility, the network administrator can monitor, control and manage the switch from a computer on the same local area network (LAN).

To access the Web Browser Utility, do the following:

1. Obtain the IP address of the switch from the DHCP server.
2. Open a web browser and type the obtained IP address on the address bar. In the example below, the IP address is “192.168.0.1”.

Figure 4-4: Address Bar



3. The Login screen appears.

Type the **User name** and **Password**, and click **OK**. By default, the User name is “admin” and the Password is empty.

Figure 4-5: Login Screen



4. The Web Browser Utility screen appears.

4.3.3.2 The Web Browser Utility Interface

Figure 4-6: The Web Browser Utility Screen

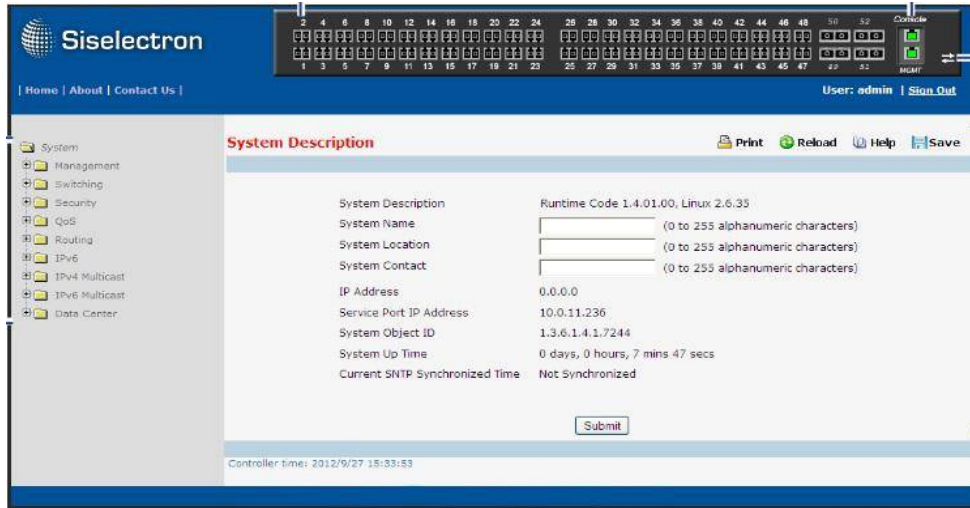


Table 4-1: Web Browser Utility Screen

Table 4-1: Web Browser Utility Screen		
1	Menu	Click a menu folder to access the submenu functions.
2	Ports	Click a port number to view and configure the port.
3	Toggle icon	Click to toggle between showing the front and rear panel of the switch.
4	Settings Screen	Displays the configurations of the selected menu, submenu or port.

Once you login to the Web Browser Utility, the **System Description** screen is displayed. This screen displays the basic network configurations of the switch.

To protect the switch from unauthorized users, it is recommended to set the Web Browser Utility login password and define access levels given to users.

1. On the left panel menu, click **Management > User Management > User Accounts**.
2. In **User**, select one of the following users:
 - **admin**: To manage the administrator account.
 - **guest**: To manage the guest account. By default, the guest account is limited to “Read-Only” mode.
 - **Create**: Select this to create a new user. Then type the User Name to be given to the new user account.
3. Type the password in **Password** and **Confirm Password**.
4. In **Access level**, select the access level to be granted to the user. Options are:
 - **Suspended**: Select this only when you want to temporarily suspend or deny an existing user from accessing the Web Browser Utility.
 - **Read-Write**: Select this for full access. Full access is usually granted to the administrator account.
 - **Read-Only**: Select this to allow the user to view the switch configurations but cannot modify them.

5. For **SNMP v3 User Configuration**, select the **SNMP v3 Access Mode**, **Authentication Protocol**, and if necessary enter the **Encryption Key**.
6. When done, click **Submit**. The user account is modified or created.

NOTE:

If you want to completely remove a user account, select the user and click the **Delete** button on the bottom of the screen.

4.4 Upgrade the Firmware

The switch firmware is continuously being upgraded to meet more networking demands. It is recommended to upgrade the firmware to ensure that your switch has the latest firmware for optimum performance.

Basically, the latest image file is necessary to upgrade the firmware. In some cases, the kernel version may also have to be upgraded. Check the release notes to determine if the kernel and uboot versions need to be upgraded.

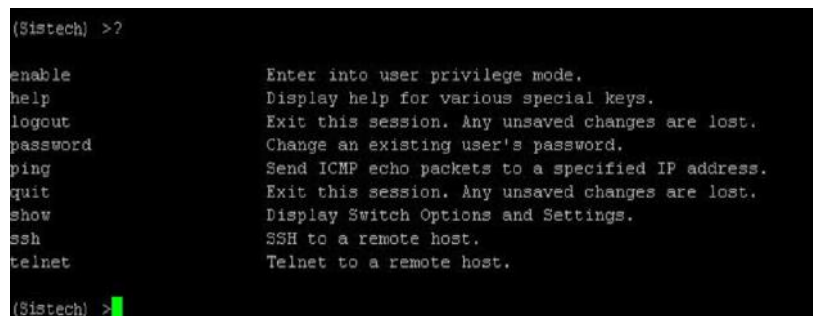
4.4.1 Upgrade the Firmware Image File

To upgrade the image file, perform the following:

1. Connect the TFTP server to the switch via the management port.
2. Set the service port IP address using the following commands:
 - a. Connect the console cable to the console port.
 - b. On a terminal emulation program (such as Teraterm or HyperTerm), set the baud rate to 115200 (115200, n, 8, 1).
 - c. When prompted for the username and password, input “admin” for the username and leave the password empty.
 - d. Set the service port IP address (in the example below, the service port IP address is set to 192.168.2.1):

```
Configure
Serviceport protocol none
Serviceport ip 192.168.2.1 255.255.255.0
exit
```

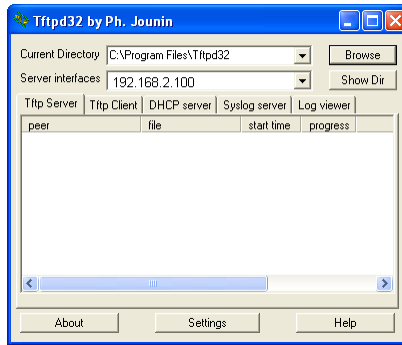
Figure 4-7: Set Service Port IP Screen



```
(Sistech) >?
enable          Enter into user privilege mode.
help            Display help for various special keys.
logout          Exit this session. Any unsaved changes are lost.
password        Change an existing user's password.
ping            Send ICMP echo packets to a specified IP address.
quit            Exit this session. Any unsaved changes are lost.
show            Display Switch Options and Settings.
ssh             SSH to a remote host.
telnet          Telnet to a remote host.
(Sistech) >
```

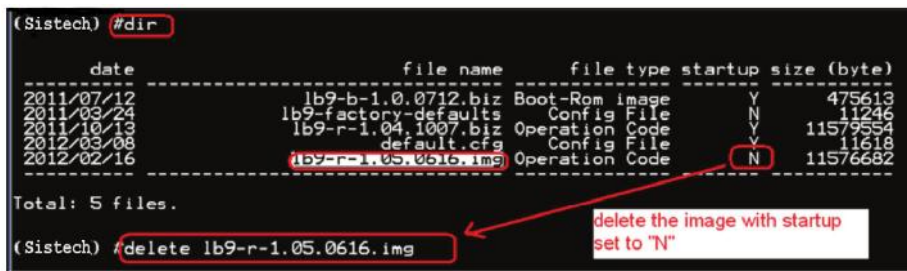
3. Prepare the TFTP server and save the latest image file (*.img) in its root directory (assuming that the IP address is 192.168.2.100).

Figure 4-8: Example of TFTP Server Screen



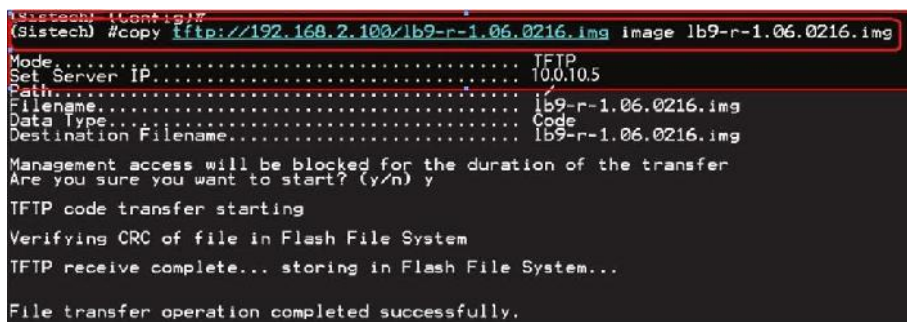
- The switch supports two images. This is to ensure that if one image file fails, another backup is ready for use. Use the “dir” command to check if the image files exist. If the switch already contains 2 images, you need to remove one of the images and use the “delete <image name>” command to delete the non-startup image.

Figure 4-9: Delete Image Screen Sample



- Input the following command to update the image:
“copy tftp://<server ip addr>/<file name> image <file name>”.

Figure 4-10: Update Image Screen Sample



- Input the following command to set the new image as the “next boot” image:
“boot-system opcode <file name>”.

Figure 4-11: Set Boot Image Success Screen Sample



- Reboot the switch.
- After the system boots up, input “show version” to display and verify the updated version.

4.4.2 Upgrade Kernel, Uboot and Rootfs

After upgrading the firmware image file, check if there is a need to upgrade the kernel, uboot, and root file system.

To determine whether an upgrade is necessary, perform the following:

1. Boot to normal mode and execute the “**whichboot**” command to check the switch kernel and uboot versions.

Figure 4-12: Check Version Screen Sample

```
(Sistech) #whichboot
-----
file name      file type  startup
-----
ly2-kernel-1.0.2.6.img  kernel image  Y
ly2-uboot-1.0.2.1.img   uboot image   Y
default.cfg         Config File   Y
ly2-r-1.4.02.01.img    Operation     Y
vm-1.0.2.3.img       VMtracer image Y
(Sistech) #
```

2. Check the firmware release notes to determine whether an upgrade is necessary.

To upgrade the kernel, uboot, and root file system, perform the following:

1. Connect the TFTP server to the switch via the management port.
2. Set the service port IP address using the following commands:
 - a. Connect the console cable to the console port.
 - b. On a terminal emulation program (such as Teraterm or HyperTerm), set the baud rate to 115200 (115200, n, 8, 1).
 - c. When prompted for the username and password, input “admin” for the username and leave the password empty.
 - d. Set the service port IP address (in the example below, the service port IP address is set to 192.168.2.1):

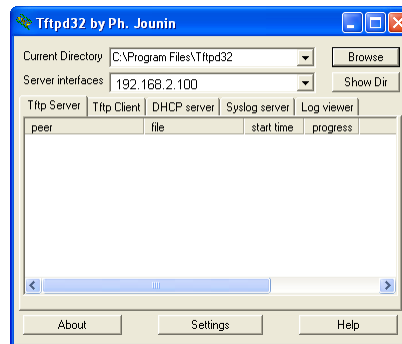
```
Configure
Serviceport protocol none
Serviceport ip 192.168.2.1 255.255.255.0
exit
```

Figure 4-13: Set Service Port IP Screen

```
(Sistech) #configure
(Sistech) (Config)#serviceport protocol none
Changing protocol mode will reset ip configuration.
Are you sure you want to continue? (y/n)y
(Sistech) (Config)#serviceport ip 192.168.2.1 255.255.255.0
(Sistech) (Config)#exit
(Sistech) #
```

3. Prepare the TFTP server and save the latest image (kernel, uboot, rootfs) in its root directory (assuming that the IP address is 192.168.2.100).

Figure 4-14: Example of TFTP Server Screen



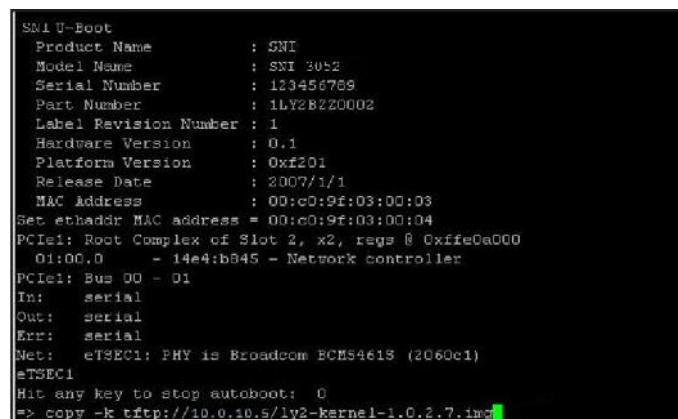
4. Reboot the switch.
5. When the switch boots up, and the “Hit any key to stop autoboot” message is displayed, press any key to stop autoboot.

Figure 4-15:



6. On the “=>” prompt, use the following commands to download uboot, kernel, and rootfs image files:
 - “copy -b tftp://<server ip addr>/<uboot filename>”
 - “copy -k tftp://<server ip addr>/<kernel filename>”
 - “copy -r tftp://<server ip addr>/<rootfs filename>”

Figure 4-16: Copy Kernel Image Screen Sample



7. Once complete, a “done” message appears and the command prompt “=>” follows. Input “reset” to reset the switch and boot to normal mode.

Figure 4-17:



5.1 Troubleshooting

Below is a list of the common problems that you may encounter when using the switch. Try to solve these problems with the suggested solutions before calling for service. If problems persist, contact customer support.

5.1.1 Diagnostic Switch Indicator

Table 5-1: Troubleshooting Tips

Problem	Solution
Power LED is off.	<p>The switch does not receive any power.</p> <ul style="list-style-type: none"> • Check if the AC power cords are connected properly. • Check if the power supply units are completely seated in the chassis. • The power supply unit may be damaged and needs replacement. See “5.2 Replace the Power Supply Unit” on page 38.
A Port LED is off.	<ul style="list-style-type: none"> • Check if the switch and the connected device are powered on. • Check if the connection in both ends are properly connected. • Check if the cable matches the required length and specification. • Check for a defective cable/port module.
PSU 1 & PSU 2 LED is in Yellow state.	<p>Possible issues:</p> <ul style="list-style-type: none"> • Fan Lock (15 sec.) • OTP: Over Temperature Process • OCP: Over Current Process • OVP: Over Voltage Process • UVP: Under Voltage Process

5.1.2 Power and Cooling Problems

If the power indicator does not turn on when the power cord is plugged in, you may have a problem with the power outlet, power cord, or power supply. However, if the unit powers off after running for a while, check for loose power connections, power losses or surges at the power outlet, and verify that the fans on the unit are unobstructed and running prior to shutdown. If you still cannot isolate the problem, then the internal power supply may be defective.

5.1.3 Installation

Verify that all system components have been properly installed. If one or more components appear to be malfunctioning (such as the power cord or network cabling), test them in an alternate environment where you are sure that all the other components are functioning properly.

5.1.4 In-Band Access

You can access the management agent in the switch from anywhere within the attached network using Telnet, a Web browser, or other network management software tools. However, you must first configure the switch with a valid IP address, subnet mask, and default gateway. If you have trouble establishing a link to the management agent, check to see if you have a valid network connection. Then verify that you entered the correct IP address. Also, be sure the port through which you are connecting to the switch has not been disabled. If it has not been disabled, then check the network cabling that runs between your remote location and the switch.

5.2 Replace the Power Supply Unit

The switch has two power supply units (PSU). The PSUs can be replaced without the use of special tools. Before replacing any of the PSUs, verify the status of the PSU to determine if there is a need for replacement. To check the status of the PSU, do the following:


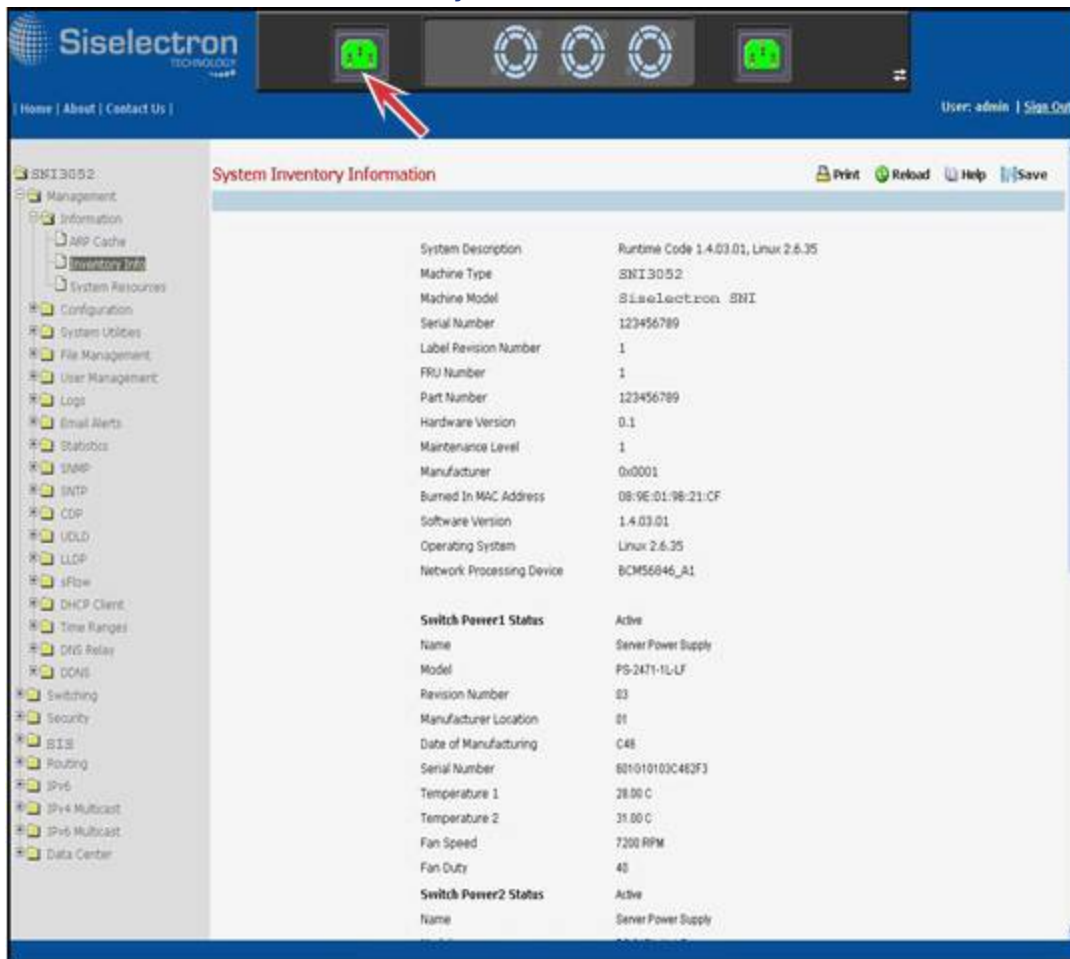
1. Login to the Web Browser Utility.
2. On the upper panel, click  to display the rear panel image of the switch.
3. Click the PSU to check its status.

Figure 5-1: Access PSU Info on Web Utility



5.2.1 Remove the Power Supply Unit

1. Disconnect the AC power cord of the PSU that you want to remove.

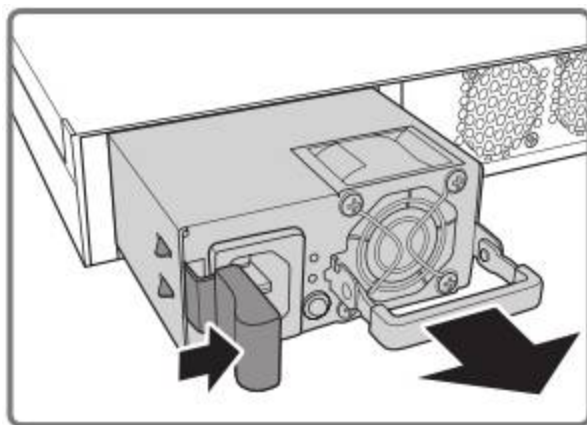


CAUTION:

Ensure that the AC power cord is disconnected from the PSU that you want to remove.

2. Press the plug retainer and pull by the handle to slide the PSU away from the chassis.

Figure 5-2: Remove Power Supply Unit



3. Take note of the part number of the removed PSU.

5.2.2 Replace the Power Supply Unit

1. Make sure that the part number of the new PSU is the same as the part number of the removed PSU.
2. Ensure the PSU orientation is correct and then slide the new PSU into the chassis until it is firmly seated.
3. Connect the AC power cord to power on the switch.



WARNING:

Do not install the new PSU into the chassis by force. It should slide into the chassis smoothly. In case otherwise, check if the PSU is properly oriented.

5.3 Customer Support



WARNING:

There are no user-serviceable parts inside the PSU or Hot-swappable Fan module. Do not disassemble any part of the PSU or Hot-swappable Fan module. Doing so voids the warranty and regulatory certifications.

For maintenance services not mentioned in this guide, please contact the manufacturer's customer support number as indicated on the warranty card.

